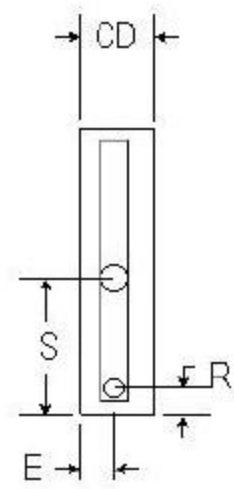
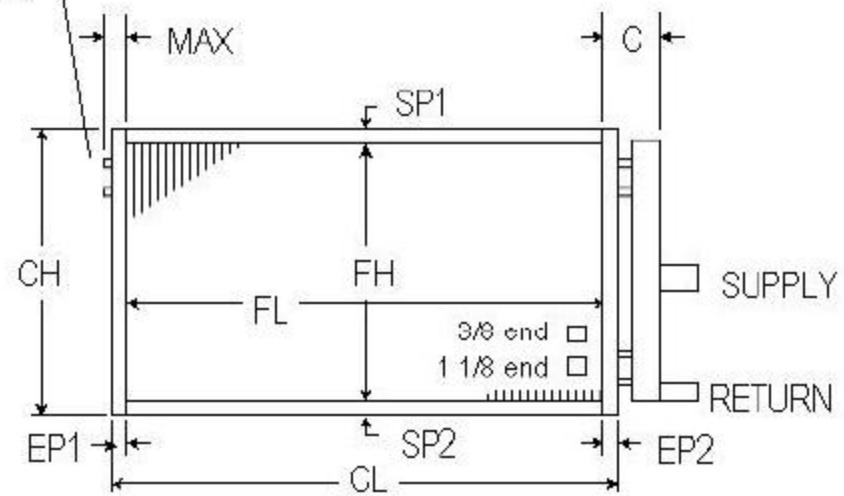


Spun Closed Ends



ROWS AVAILABLE	1	2			
FPI AVAILABLE	6 11	7 12	8 13	9 14	10
TUBES OD & Wall Thickness COPPER ONLY	5/8	.025		.035	
FINS Material & Thickness	ALUM.	.006	.010		
	COPPER	.006			
CASING	16 GA. GALV. STEEL				
	16 GA. STAINLESS STEEL				
HEADERS COPPER ONLY	1 ROW	2 5/8			
	2 ROW	3 1/8			

**DIMENSIONAL DATA IN INCHES**

DIMENSIONAL DATA IN INCHES																	SUPPLY		RETURN		
ITEM	QTY	ROWS	FPI	SP1	FH	SP2	CH	EP1	FL	EP2	CL	MAX	C	OAL	L	CD	S	E	R	E	
P.O. #								CUSTOMER													
W.O. #								MODEL NO.													
APPROVED BY								TAG:													
DATE								NOTES													

CONNECTION SIZES		
□ MPT	SWEAT	FPT
SUPPLY	RETURN	CU
		STL

JFD Tube & Coil Products, Inc.  
 PO Box 6309 / 7 Hamden Park Dr  
 Hamden, CT 06517  
 Ph: (800) 824-2664 Fx: (203) 281-7368  
 Visit Our Website: [www.jfdcoil.com](http://www.jfdcoil.com)

Performance Data	CFM	EAT	LAT	CAPACITY	STEAM PRESSURE (psig)
------------------	-----	-----	-----	----------	-----------------------